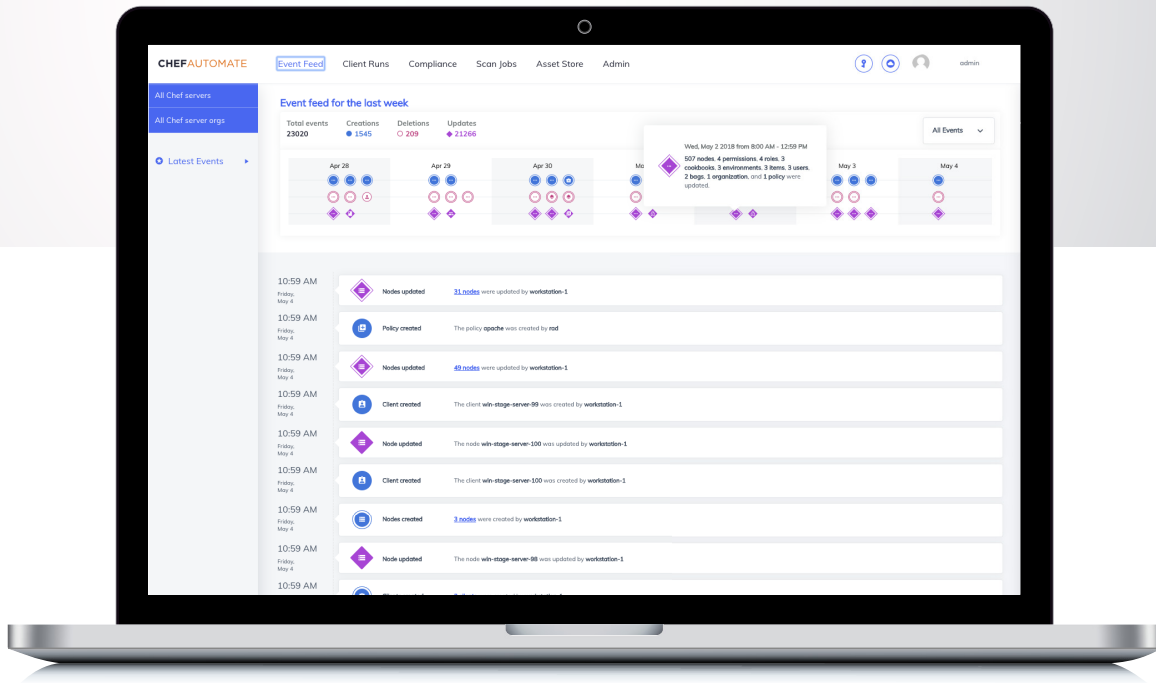


CHEFAUTOMATE

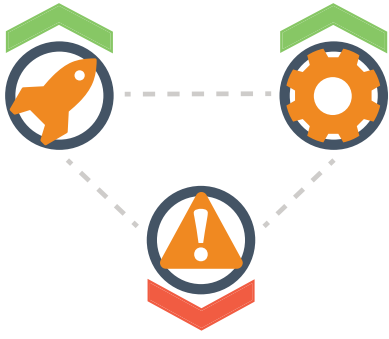


Chef Automate is an enterprise platform that allows developers, operations and security engineers to collaborate effortlessly on delivering application & infrastructure changes at the speed of business. Chef Automate provides actionable insights with enterprise scale and performance across multiple data centers and cloud providers.

Using Chef Automate, you can:

- **Gain operational visibility and debug infrastructure problems.** Dig into the causes of compliance failures or configuration errors across your entire fleet, or filtered by the systems that matter most. Use Chef Automate's trend graphs, rich query language and other sophisticated interfaces to quickly sift through the noise and prioritize solutions.
- **View and respond in real-time to fleet changes.** Get a real-time view of all changes happening in your environment, whether user- or machine-initiated. See how configuration and compliance policy changes impact each other over time. Get notified immediately by chat or webhook for any failures.
- **Use historical data to improve DevOps practices or satisfy audit requirements.** Examine past failures and trends to identify areas for targeted process improvement. Use reports to answer auditors' questions about current and historical compliance.
- **Extend compliance beyond individual machines to any environment.** Use Chef Automate's built-in InSpec-based scanner to scan both individual machines and cloud APIs for policy conformance without installing any agents. Use one of Chef Automate's 90+ built-in compliance baselines to get started quickly with evaluating and correcting your fleet's security posture.





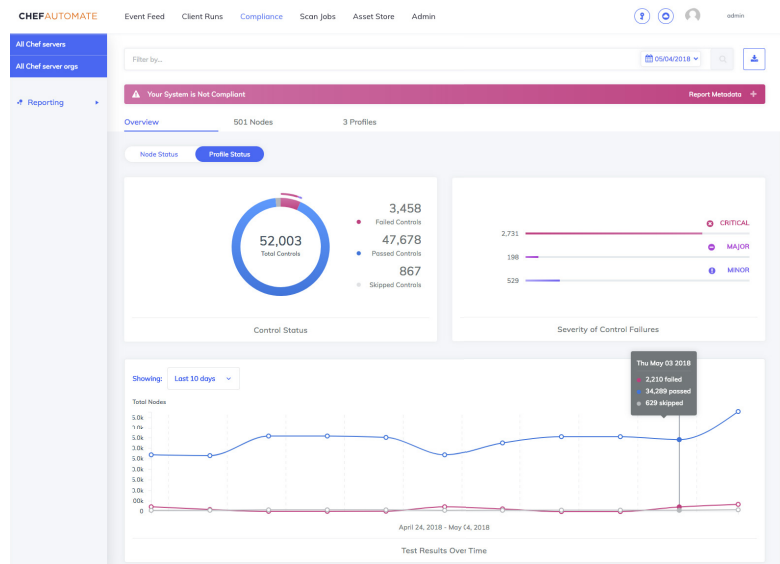
Chef Automate measurably increases your ability to delivery software quickly, increasing speed and efficiency while decreasing risk. You'll be able to use the data in Chef Automate to quantify improvements.

Built on an Open-Source Foundation

Chef Automate is powered by Chef's three open-source engines: Chef for infrastructure automation, Habitat for application automation, and InSpec for compliance and security automation. You can integrate Chef Automate with any or all of these open-source tools to effectively leverage their data for actionable insights.

Want to Learn More?

Get a free trial of Chef Automate today by visiting www.chef.io/automate.



Chef Automate lets you examine current and historical fleet-wide compliance using InSpec data to ensure changes aren't increasing your level of risk.

"Chef Automate allows us to have security, operations, and application developers see one shared picture of what reality looks like. When they all have a seat at the table, they begin to collaborate and start thinking that [automation] is something that will make their job better."

— Michael Hedgpeth, Director, DevOps and Application Operations, NCR Hospitality

